



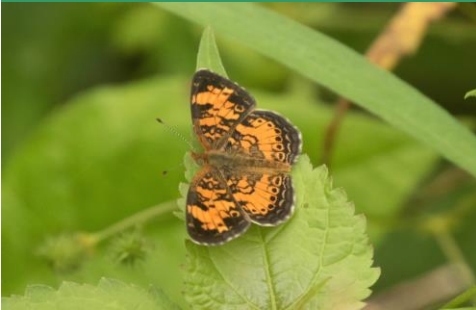
MLNC

*Mt Lebanon Nature
Conservancy*



Fall, 2018

Member Newsletter



Inside

Library Garden Tour Stop

Bird Park MLNC reforestation site featured on library garden tour with annotated nature walk.

2

BioBlitz

What lives in your 'back yard'?
All species inventory conducted in Bird and Robb Hollow Parks.

3

Upcoming Dates

Annual Meeting, Volunteer Opportunities, and more

5

Untangled Acres

A Story of Reclamation and Restoration in Twin Hills Park

In a back corner of Twin Hills park, a creeping menace had claimed dominion over 7 acres or nearly one third of the 22-acre park.

Invasive plants Japanese (bush) honeysuckle and wild grapevine so densely covered the area that native plants and trees were choked out and no understory existed.

Thanks to a Scout project by Troup 28, a trail they carved allowed some access to that section. Still, it was a poor habitat for flora and fauna with very limited biodiversity.

Without remediation, these invasive plants would continue their creep into the rest of the park.

MLNC recognized the threat and knew a plan was needed to remove these invasive plants and restore native trees, shrubs and grasses to re-establish a robust environment for insects, birds and animals. And people too.

Continues Page

4



Bird Park Beauty

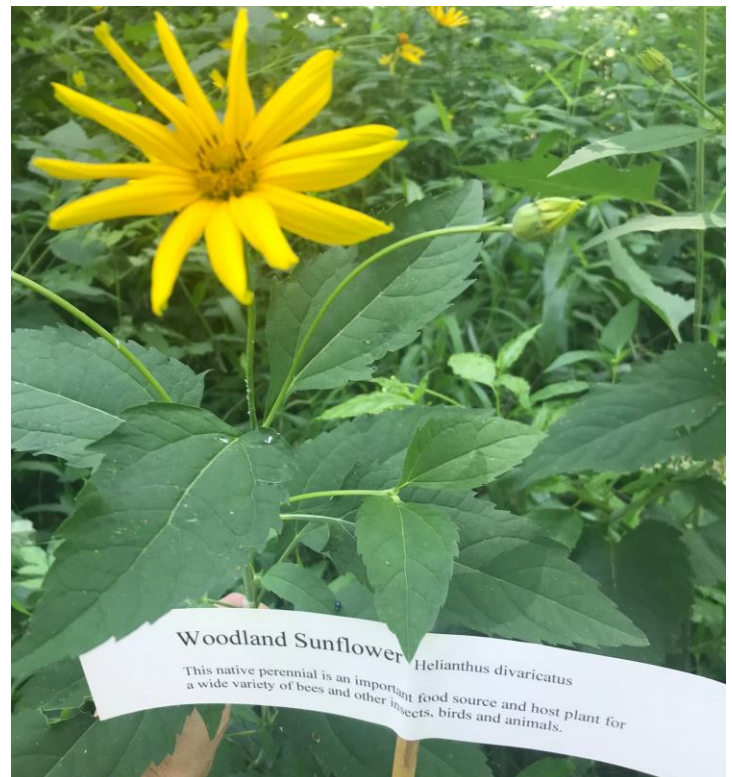
Mt Lebanon Library Garden
Tour, July 2018

Reforestation project site in Bird Park featured in Library Garden Tour

A sunny July day was ideal for a self-guided nature walk down a wooded nature trail in Bird Park to the site of an extensive invasive plant removal and reforestation project.

This project, undertaken by the Municipality and MLNC in 2015 – 2017, cleared 7 acres of invasive species such as Bush honeysuckle and replanted them with native grasses, wildflowers, trees and bushes.

This site is beautifully being restored to healthy biodiversity and was the destination of a stop along the annual Mt Lebanon Library Garden tour. Signs along the trail enabled visitors to recognize native flora and the signs of nature's processes at work. 125 visitors ventured down the path to our table to learn about this project, and other work of the MLNC and its volunteers to keep Bird Park and other Mt Lebanon green spaces enjoyable for everyone.



MLNC is grateful to the Mt Lebanon Public Library for inclusion on their annual Mt Lebanon Garden Tour



School in the Park

Annual 3rd grade spring field trip to Bird Park

May 13 – 16, 2019

Instructors Needed!

- Background in biology, environment or education helpful.
- Training and all content & materials provided.
- 4-hour time slots. Clearances required.

Email: lebonature.sip@gmail.com for more information

Park Prep for SIP – May 4

We love to get Bird Park “spiffed up” for our 3rd graders. Volunteers needed for trail mulching 9:00 – noon on May 4th. Meet at Bird Park pavilion. Tools provided, though rakes are appreciated.

Help us make another year of SIP amazing for the kids!

What's in the woods?

BioBlitz

Inventory of plants, insects, birds and animals in Bird and Robb Hollow Parks

In July, MLNC Board Members Chris and Jim Phillips organized a BioBlitz in two of our community parks. A return to Bird Park, which was previously inventoried in 2003 and 2008 and a first time in Robb Hollow Park. Volunteers observed, researched and documented over 350 species of plants, fungi, arthropods (insects, mites and such), amphibians, birds and mammals.

Some first-time appearances by rosebay (of the Rhododendron family) and broad-leaf sedge. Also, in the insect and animal department we found for the first time an American painted lady butterfly (see photo on cover) and a little brown bat. And for the first time, we saw two problematic invasives, Creeping Charlie and California privet.

As always, MLNC will keep a watchful eye for these invaders to our parks. Thanks to all the volunteers who assisted.



Check out all the results published on the MLNC website.

Photo credit and thanks to Lauren Nagoda

UNTANGLED ACRES Continued from page 1



A PLAN

A similar effort had successfully been conducted in Bird Park (2015 – 2017) so there was an effective model to follow. A three-way collaboration between the Parks Advisory Board, the Mt Lebanon Dept of Public Works and MLNC positioned funding for this project in the 2018 Municipal budget.

And because Mt Lebanon puts great value on its green spaces, it was prioritized in the budget process and first year funds granted.

The plan included a professional excavator to cut and grind the invasive plants, the purchase of native trees, shrubs and grasses with restoration planting by MLNC led volunteers.



BEFORE - Japanese (bush) Honeysuckle and wild Grapevine



Upcoming Dates

Annual MLNC Member Mtg
November 10, 2:00pm
Mt Lebanon Library

Our speaker is Kate St. John, Birder, Blogger at *Outside My Window* and Peregrine Falcon Monitor.



Topic: **Peregrine Falcons, an environmental success story**

An engaging account of the lives and history of peregrines in the Pittsburgh area, you'll come away from this talk with an appreciation for these fierce and beautiful raptors.

Free to the public

Light refreshments to be served

Park Work Days

Third Saturday of every month
April through October
9:00am – noon
Please check our website for locations and join us!

Bird Park Trail Mulching for School in the Park
Saturday, May 4th 9:00 – Noon
Meet at Pavilion

UNTANGLED ACRES Continued from page 4

THE RESULTS

In August, the excavator finished clearing almost 8 acres of bush honeysuckle and grapevine leaving native trees in place.

Planting days in fall and spring will be announced (check MLNC Facebook page or website at Lebonature.org).

This land is being reclaimed for the use and enjoyment of people and creatures alike!

BEFORE



AFTER



POLLINATORS GARDEN

Twin Hills was also enhanced this year by Girl Scouts Troop 50287 and the High School 10th grade Troop who planted a Pollinators Garden by the bird blind installed in a 2017 Boy Scout project.



A great destination on your hike through Twin Hills Park.

Follow trail markers to "Carriage Park".

MLNC Needs You

Our work protecting and enhancing our Mt Lebanon parks, our programming such as School in the Park (a 33+ year tradition), and expert led hikes and lectures are made possible through community support.

We accomplish much of our work through volunteers and with funding derived from memberships and donations.

Please consider becoming a member of the Mt Lebanon Nature Conservancy and together we can **Protect. Respect. Enjoy** our community parks.



Lebonature.Org

Fall, 2018

MLNC

P.O. Box 14901
Pittsburgh, PA 15234

Lebonature.org



Please complete the enclosed Membership Application/Renewal and send with your check in the envelope provided.

Membership and Donations also accepted online at **Lebonature.org**.

We appreciate your support!

MLNC Board

CONNECT WITH US

MLNC Facebook page

Lebonature.org